



Illinois Spoonpluggers Newsletter

Dedicated to the teachings of E.L. "Buck" Perry
The Father of Structure Fishing

November Meeting Notes: 10 members attended the meeting. We discussed *Presentation of Lures*, Vol. 5 pg. 19 and pg. 24 from the Home Study Course.

December Meeting:

ILLINOIS SPOONPLUGGERS HOLIDAY PARTY
THURSDAY, DECEMBER 10, 7:00 PM
GIORDANO'S PIZZERIA IN WESTCHESTER

Spouses and guests are welcome!

Located at the corner of Cermak Road and
Mannheim Road (US 12-20-45) in Westchester

Club Notes:

The club was offered "FREE space to recruit members in exchange for helping me promote the show, January 26 - 30, 2011 at the Stephens Convention Center in Rosemont, IL" Please contact Jim Duplex or Jim Taylor with any Questions, Ideas, Etc...

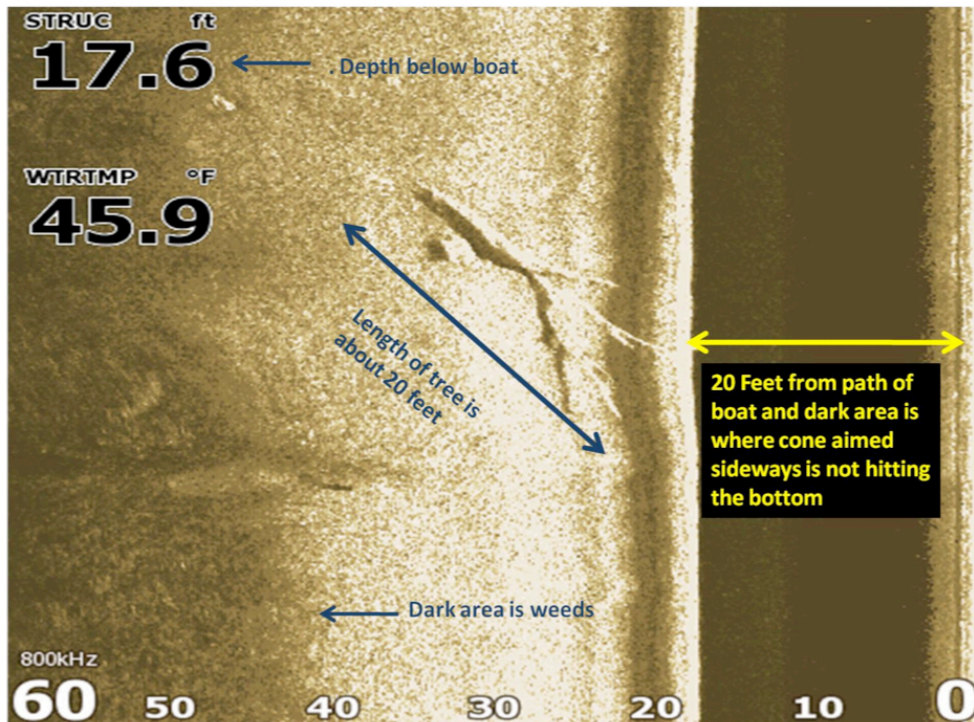
Fishing Reports: Jim Duplex, Bob Roels, Jim Taylor, Rick Matus, Jerry Hein and Frank Cipira all tried to beat the ice in Central Wisconsin on their favorite fall waters. This fall has proven to be not the best but as Buck says, a small catch made under tough conditions can be more satisfying than loading the boat when conditions are good. **Clay Russell** met up with another spoonplugger in Texas and had a good outing on a local powerplant lake. Great year guys! Thanks for sharing your reports.

HD Stuff by: Bob Roles

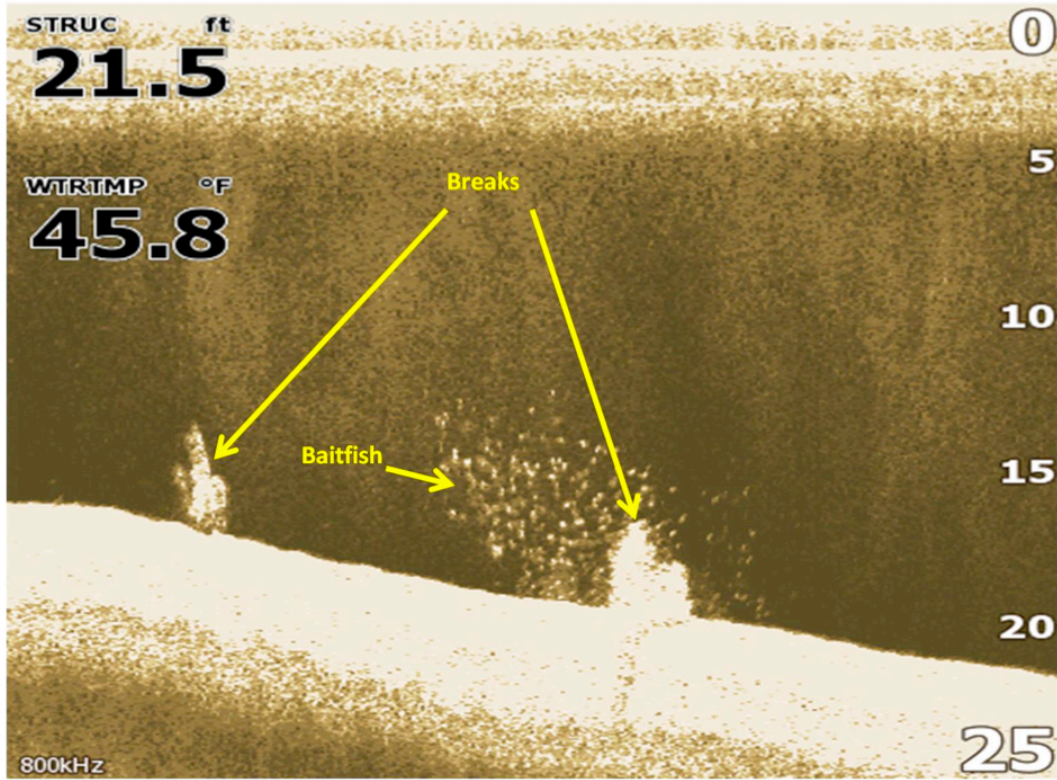
I finally took a break from fishing and took some screen shots with my Lowrance HD sidescan and downscan. Before you read this I use these as tools. They are not necessary and I would hate for anyone to buy the product thinking it will catch them more fish. HD was an expensive investment to verify what I should already know "Buck was right on". HD did save me the trouble of becoming certified diver to see what was down there.

Sidescan view of a tree laying on the bottom: You are looking 60 to the left side from deep water towards the shallows. The black area is the area below the transducer and not part of the cone sent to the side. The edge of the black is where the cone to the side starts to hit the bottom.

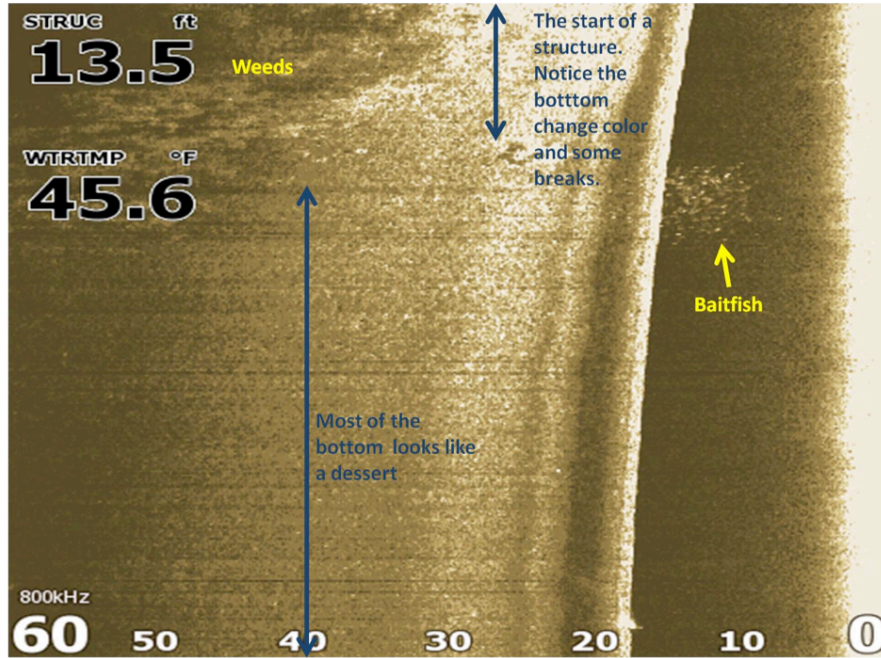
This break is not on a structure.



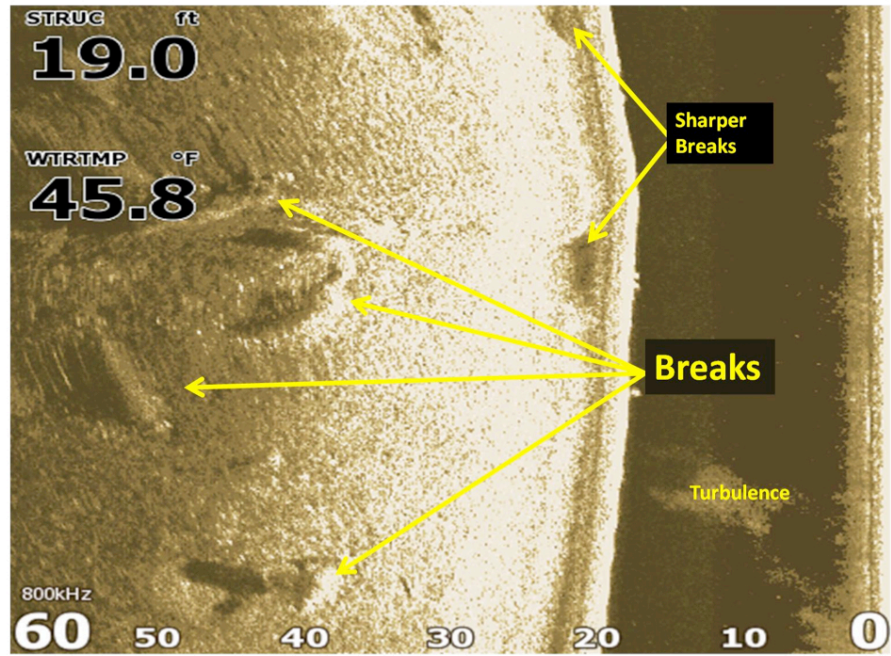
Breaks Downscan view of a break: (The cone for sidescan and downscan is not a cone but about 1 degree slice of a 20 degree cone.) The blobs are fish, the speckled clouds are baitfish, and the white blocks are some sort of object. Local anglers dump Christmas trees and cinder blocks. These breaks are off a point.



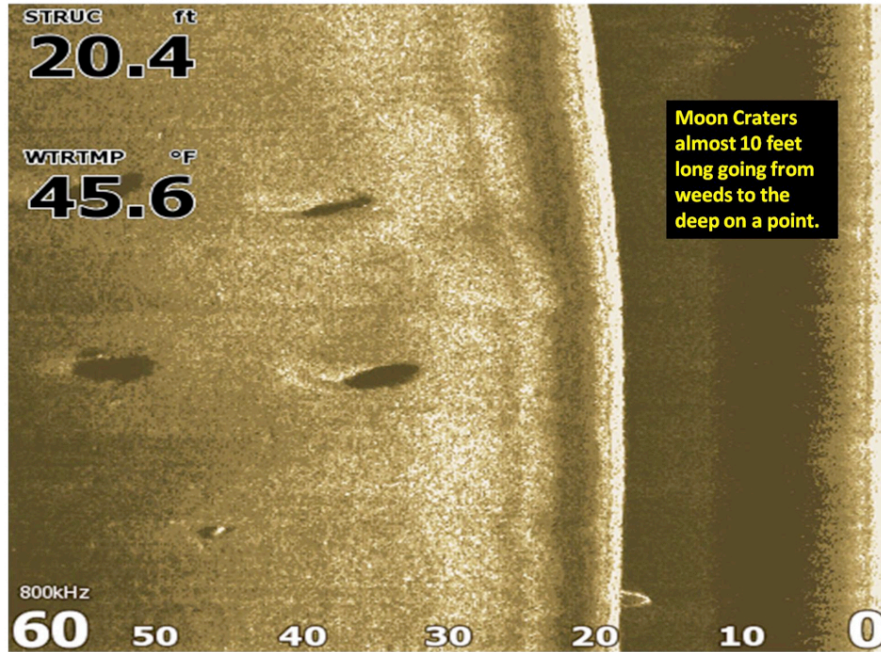
Not Structure: Most of the lake except for scattered breaks and weeds looks like a featureless dessert. You can see the bottom change as I approach a point (structure), and see baitfish appear.



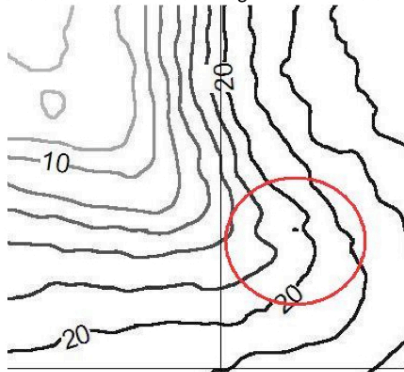
Structure: You are looking at the end of a point. See all the breaks on the bottom. The bottom is different than the surrounding area. Mapping and basic presentation told me the same thing.



Craters?: I never envisioned craters or even thought there were craters as a break. There is not much of a breakline on this point, but craters extend from the weed point to the deepest water in the area and fish use this point. The craters are only a foot or more deep.



The circled area is the edges of craters shown on a Dr. Depth contour map.



What does all this mean? Buck was right on. HD was an expensive toy to verify what I should already know. It is a tool that I can use, but if I were to bring only the essentials, it would be spoonplugs, markers, paper, and pencil. Note – I left out the depth finder. That would be my next preference. A bargain one would be fine. Save your money and don't buy this stuff thinking you can buy success. The catching is still done with the tool (Spoonplug) with the hooks on it.









SPOONPLUGGER WEB SITES:

Spoonpluggers of America:

nsoa.info

Buck's Baits:

buckperry.com

Discussion Board, links, and more:

spoonplugger.net

Newsletter Editor: Mike Lynch Mlynch7734@hotmail.com 708 655 7667

