

2010 Winter Jamboree

Mapping Exercise

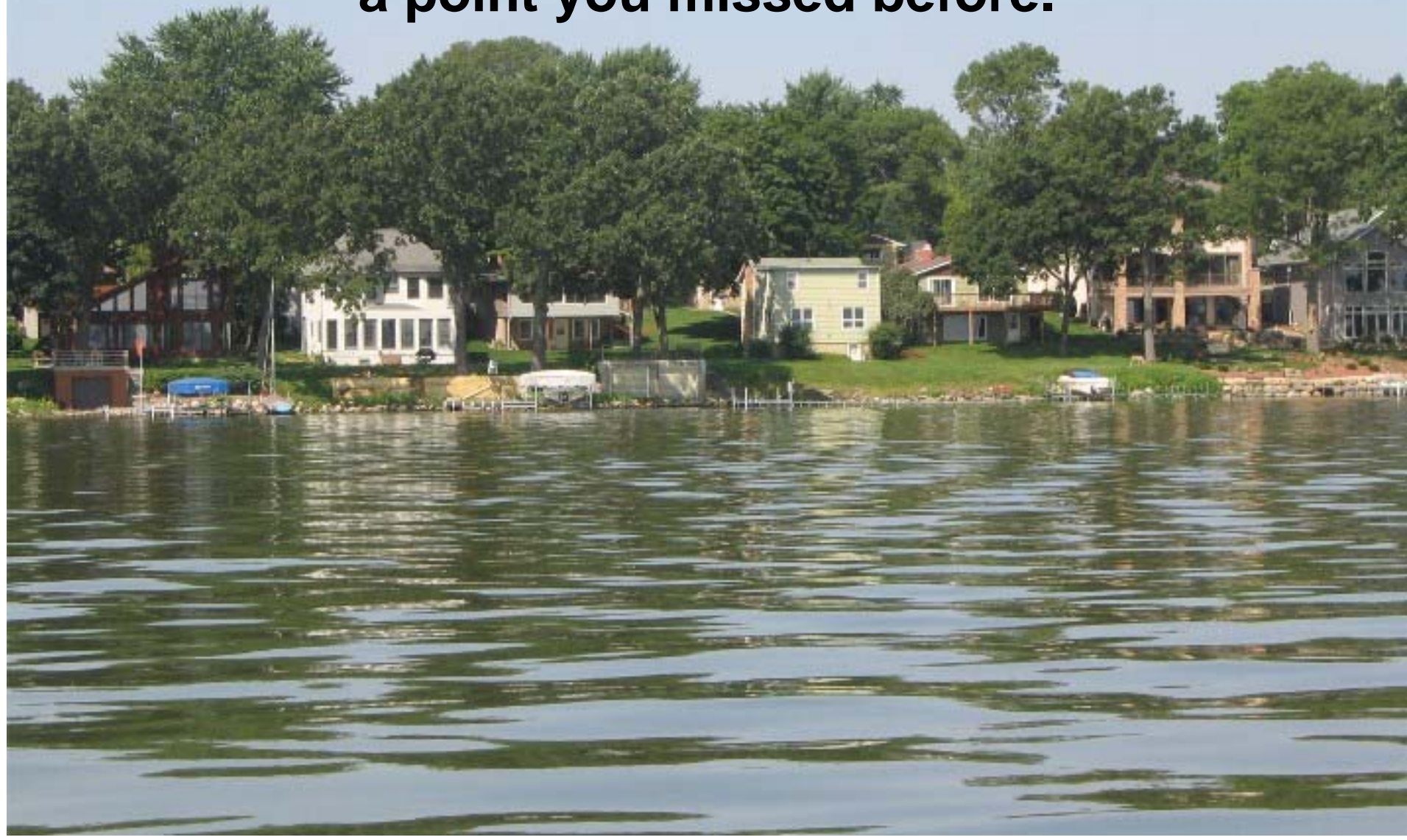
1. Draw a map using the picture, marker locations, description of the structure, and the list of depths and direction depths were taken.
2. Interpret your map.

How much detail shall I show?

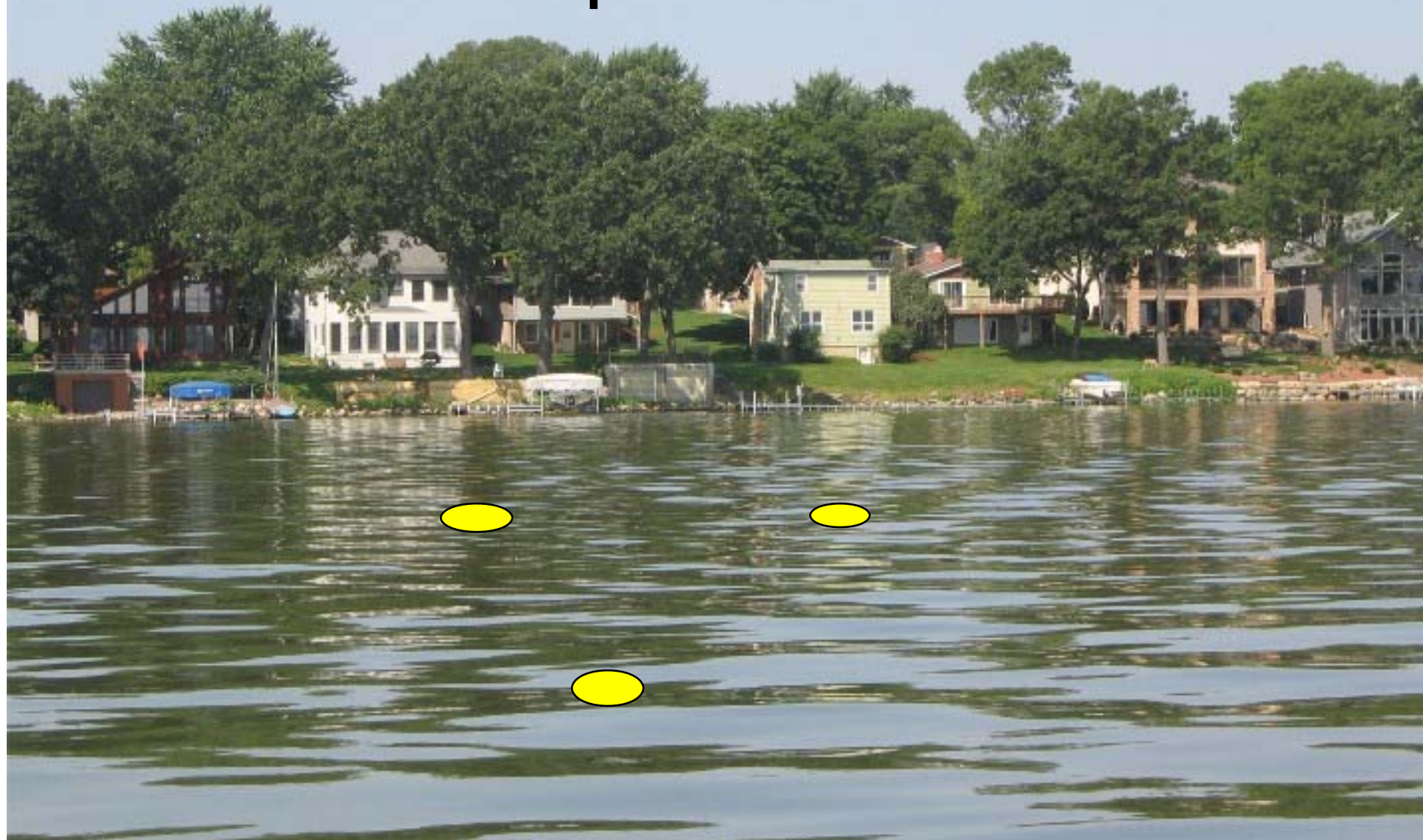
Buck Says

- “But be sure to mark the depths of the breaklines, and the deepest water in the area. The importance of the depth figures is to show how each part of the structure is related to deep water. The only contour line needed is to show the shape and size of the structure (accuracy not needed). **The shallowest breakline is used to show shape and size.** If a **second breakline occurs, it can either be shown by depth figures or drawn in.** Other things to be included are the important (or unusual) “breaks such as bushes, weeds, rocks, hangs, etc.” Volume 7, Part 1, Page 81

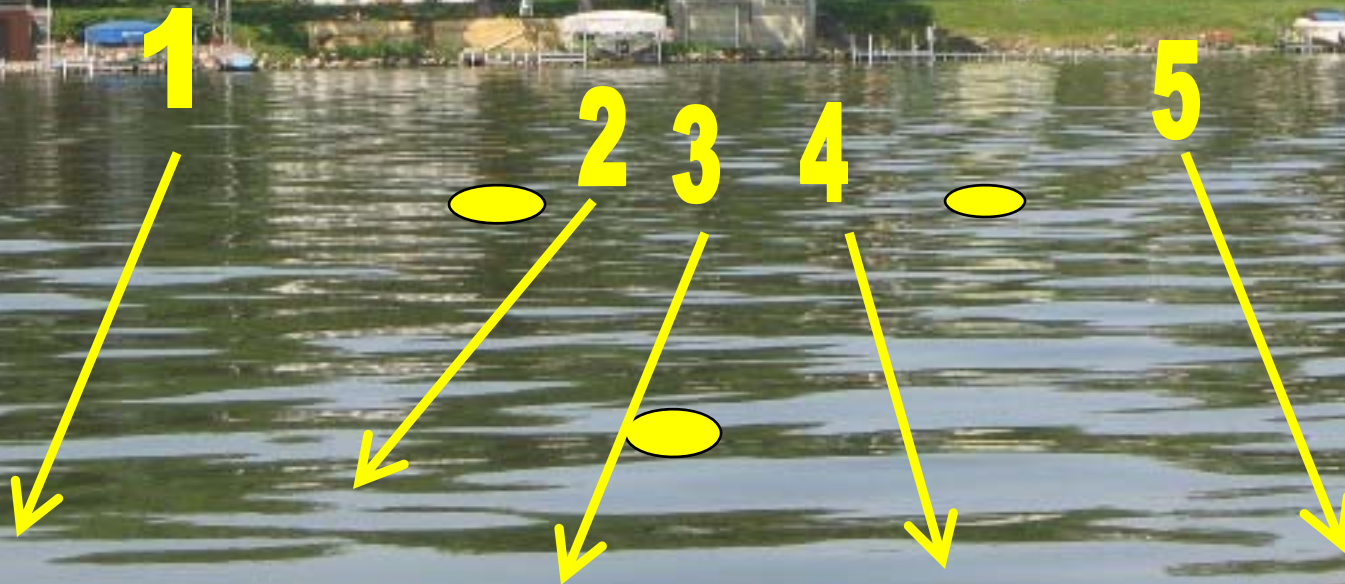
You are fishing a 26 foot deep lake with bass and pike. The weeds end at 10 feet. You found a point you missed before.



It is a ridge like point with almost no weeds on it extending from a flat. You threw two markers on the base of the point and one on the end.



**You recorded the depths
along these five lines.**



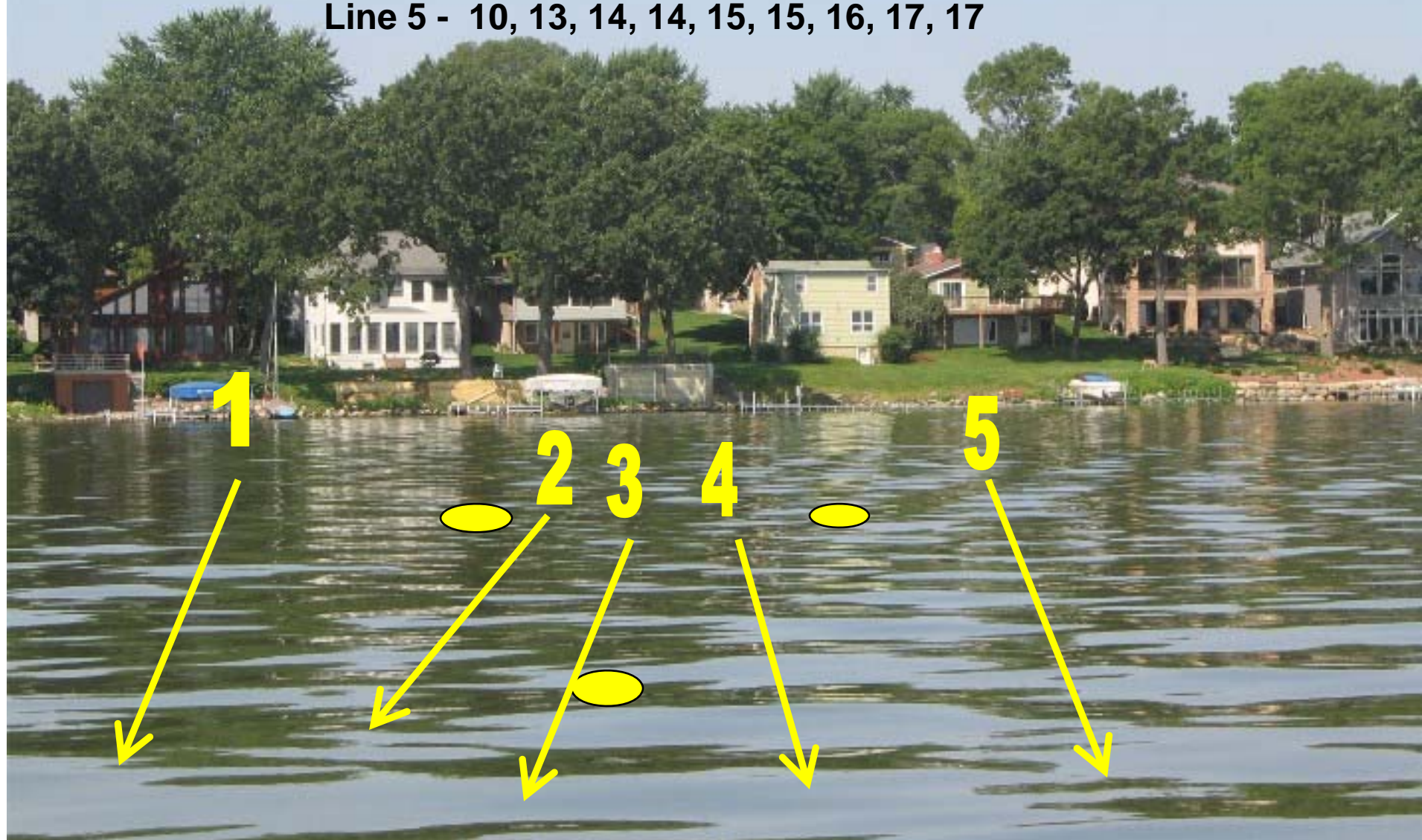
Line 1 - 10, 13, 14, 15, 17, 18, 20, 22, 23

Line 2 - 10, 13, 14, 15, 17, 19, 22, 23, 23

Line 3 - 10, 10, 10, 10, 11, 15, 19, 23, 25, 26, 26

Line 4 - 10, 13, 13, 14, 15, 16, 17, 17

Line 5 - 10, 13, 14, 14, 15, 15, 16, 17, 17



Line 1 - 10, 13, 14, 15, 17, 18, 20, 22, 23

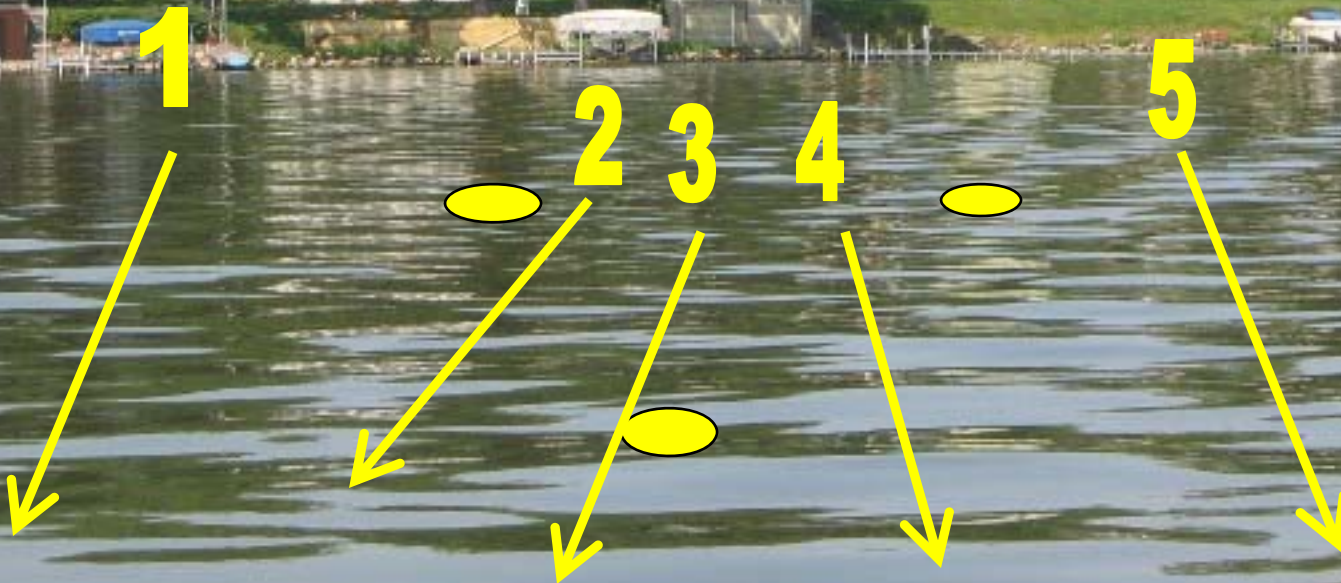
Line 2 - 10, 13, 14, 15, 17, 19, 22, 23, 23

Line 3 - 10, 10, 10, 10, 11, 15, 19, 23, 25, 26, 26

Line 4 - 10, 13, 13, 14, 15, 16, 17, 17

Line 5 - 10, 13, 14, 14, 15, 15, 16, 17, 17

**Tip - Look for the first breakline
in the list of depths!**



Line 1 - 10, 13, 14, 15, 17, 18, 20, 22, 23

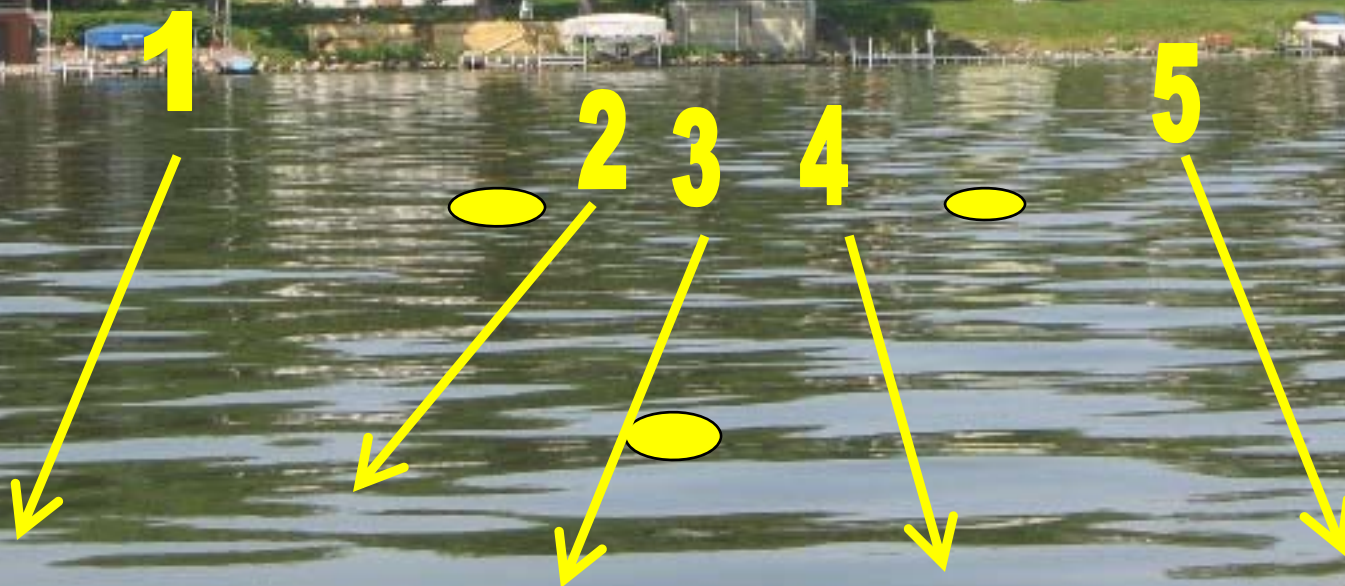
Line 2 - 10, 13, 14, 15, 17, 19, 22, 23, 23

Line 3 - 10, 10, 10, 10, 11, 15, 19, 23, 25, 26, 26

Line 4 - 10, 13, 13, 14, 15, 16, 17, 17

Line 5 - 10, 13, 14, 14, 15, 15, 16, 17, 17

**You are looking from deeper water
with your clipboard. Draw your map.**



Point Interpretation

- 1. Is this a potentially good structure?**
- 2. Where is the most likely contact point?**
- 3. Where would you anchor to check this structure?**
- 4. What does the lack of weeds on the point tell you?**
- 5. Why might you have missed this point?**
- 6. Where would you check deeper?**

You are fishing a lake with musky, pike, and bass. The weeds end at 12'. The bottom does not break deeper until you are a distance from the weedline. You found a gentle, sweeping bar. You threw 3 markers on each turn in the bar and recorded the depths along each line.



Line 1 – 12, 12, 13, 14, 15, 16, 18, 20, 22, 24, 26, 26

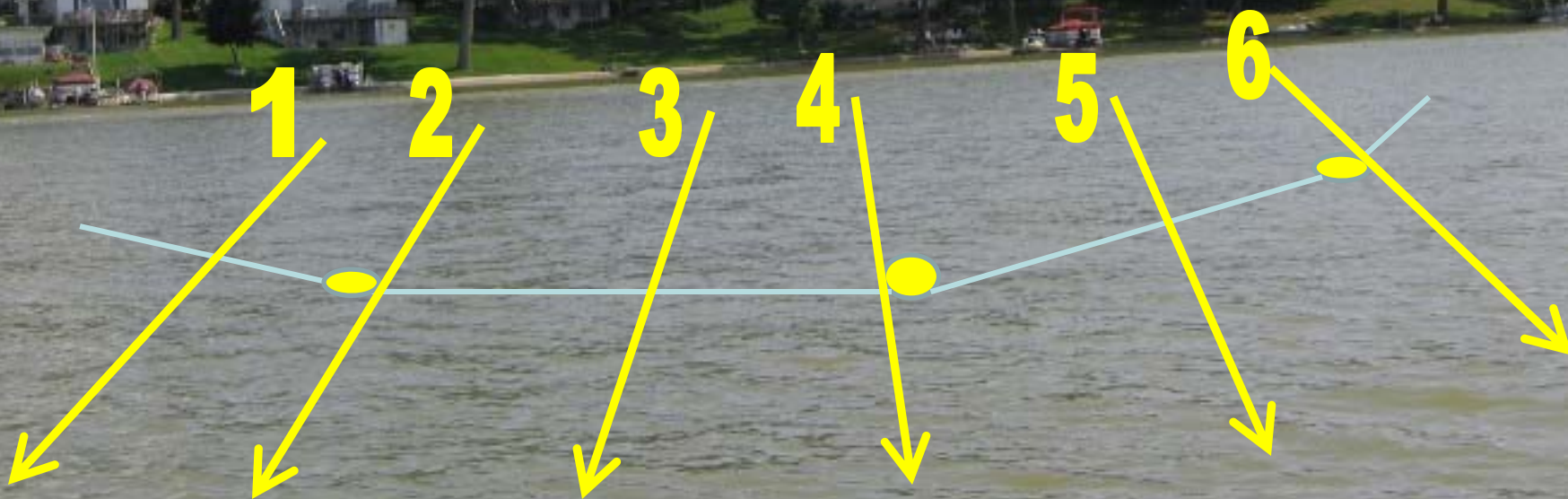
Line 2 – 12, 13, 14, 14, 15, 16, 17, 21, 24, 26, 28, 32, 33, 34

Line 3 - 12, 13, 14, 15, 16, 16, 17, 22, 25, 27, 30, 35, 37, 39

Line 4 - 12, 13, 14, 15, 15, 16, 17, 21, 24, 26, 29, 34, 37, 39

Line 5 - 12, 13, 13, 14, 15, 16, 17, 19, 21, 23, 26, 28, 31

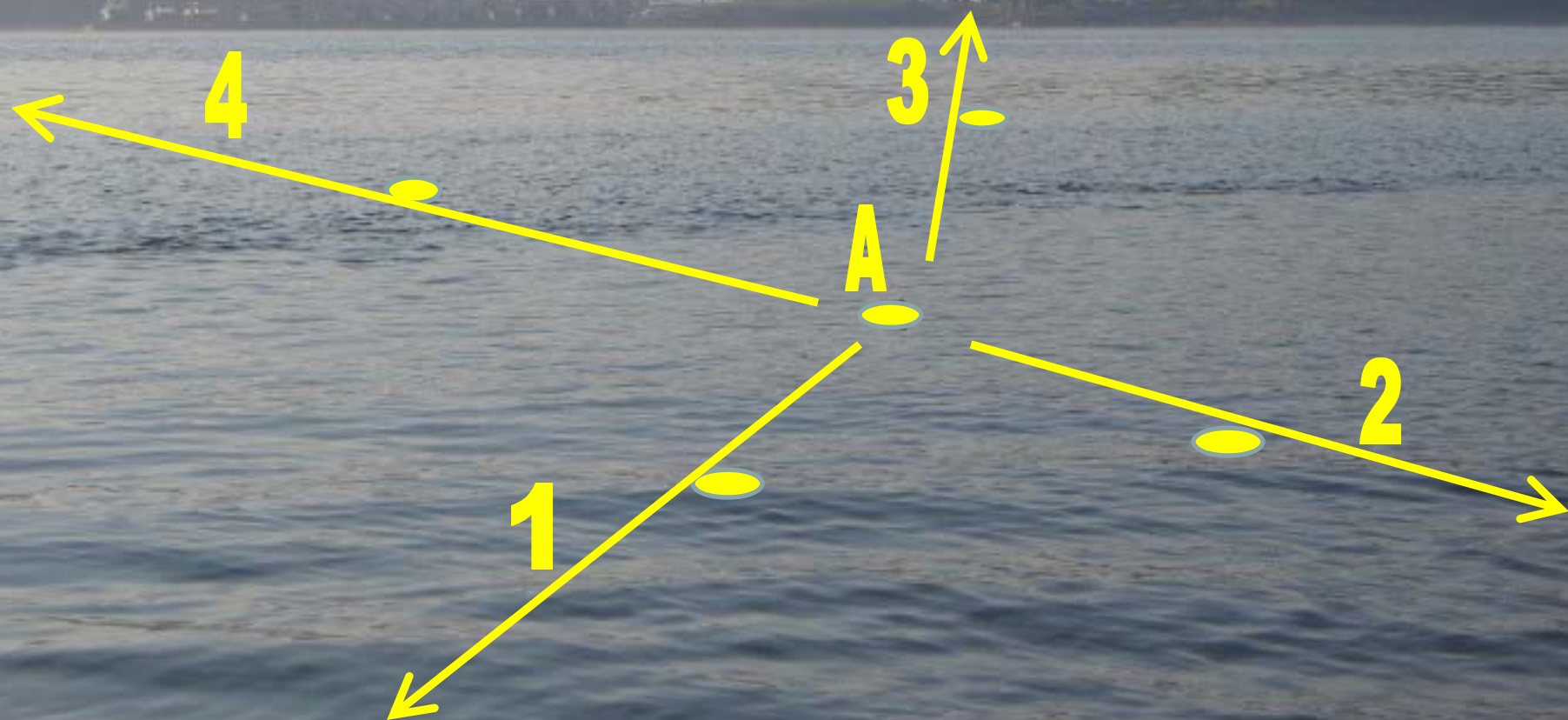
Line 6 - 12, 12, 13, 14, 15, 16, 17, 19, 21, 23, 25, 27, 30



Bar Interpretation

- 1. If it is summer and the water is dark yellow green is this a potentially good structure?**
- 2. Where is the most likely contact point?**
- 3. Where would you anchor to check this structure?**
- 4. What breaklines would you fish?**

Water color is dark. The reservoir has bass and stripers. Near a channel you found a hump and threw the first marker (A). And then you threw markers on four projections and recorded the depths along each line.

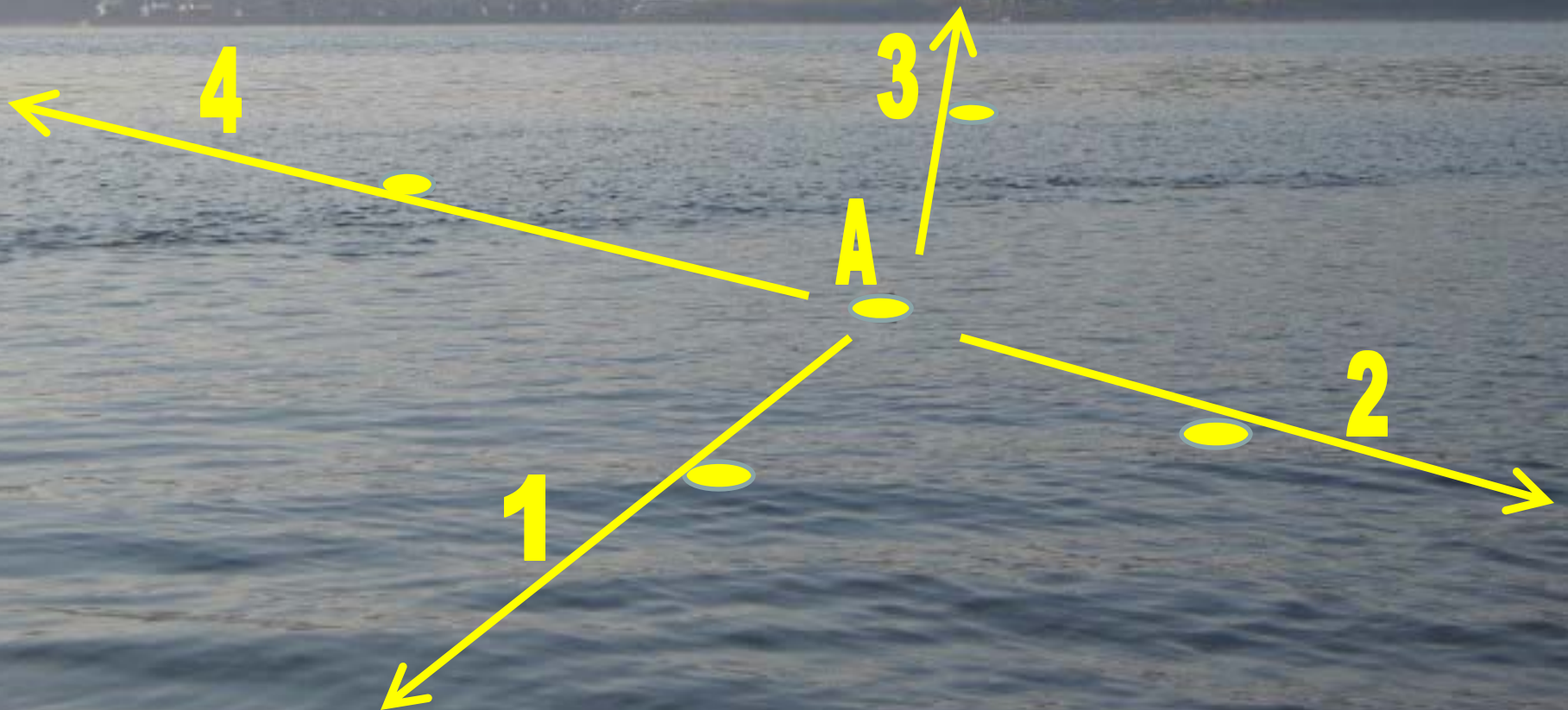


Line 1- 6,7,8,9,11,12,12,13,13,15,16,17,17,17

Line 2 - 6,7,8,9,12,13,15,16,17,19,21,23,25,27,27

Line 3 - 6, 9,11,12,15,16,17,19,21,23, 25,27,31,36,36

Line 4 - 6,8,10,12,14,15,19,21,23,25,27,31,36,38,41,48,48



Hump Interpretation

- 1. Why and where did you throw the first marker?**
- 2. What seasons would you fish this structure?**
- 3. Where is the most likely contact point?**
- 4. Where would you anchor to check this structure?**
- 5. Where would you check deeper?**