

MAP 4 MAIN LAKE WISSOTA

LAKE WISSOTA BATHYMETRIC MAP

Eagle Point, Anson and
Lafayette Townships
CHIPPEWA COUNTY
GPS and Sonar Survey by
Sean and Karen Hartnett
and Daniel Steltz
Map Construction
by Sean Hartnett

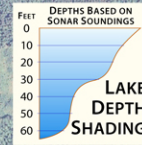
Map funded by grants from the Wisconsin DNR and Xcel Energy to
the Lake Wissota Improvement and Protection Association
in cooperation with the Beaver Creek Reserve Citizen Science Center
and the Chippewa Falls Rod and Gun Club
Lake Surveyed Summer 2008

LAKE AREA 6,148.5 Acres
Under 3 Feet 180.3 Acres 2.9%
Over 20 Feet 4,350.2 Acres 70.8%
VOLUME 161,246.3 Acre Feet
SHORELINE 51.5 Miles
MAXIMUM DEPTH 64.4 Feet
Full Pool Elevation 897.1 Feet

0 1/2 1 Mile

LAKE
WISSOTA
STATE
PARK

Lake Wissota State
Park Landing
Parking
Park Admission Fee
No Launch Fee



LOCATOR MAP

MAP 4

SEAN HARTNETT
GEOGRAPHER
UNIVERSITY OF
WISCONSIN
EAU CLAIRE
www.uwec.edu/hartnett

- EMERGENT VEGETATION
 - SUBMERGENT VEGETATION
 - FLOATING VEGETATION
 - VEGETATION DATA FROM 2008 SURVEY
 - NAVIGATION HAZARD
 - FISH CRIBS
 - BOAT ACCESS WITH PARKING
 - ROCK REEFS
 - CARRY IN ACCESS
 - LAKE BOTTOM
 - Sd Sand
 - Mk Muck
 - Gr Gravel
 - Sl Silt
 - R Rubble
- This map does not identify all locations
affording legal public access to the lake.
Please check town or county land
records for additional information.

